

Pupil Premium @ Hazeldown

Deputy Headteacher time
(improving quality of teaching
and learning)

Implementation of evidenced- informed
strategies (e.g. metacognition and the five-
a-day principle)

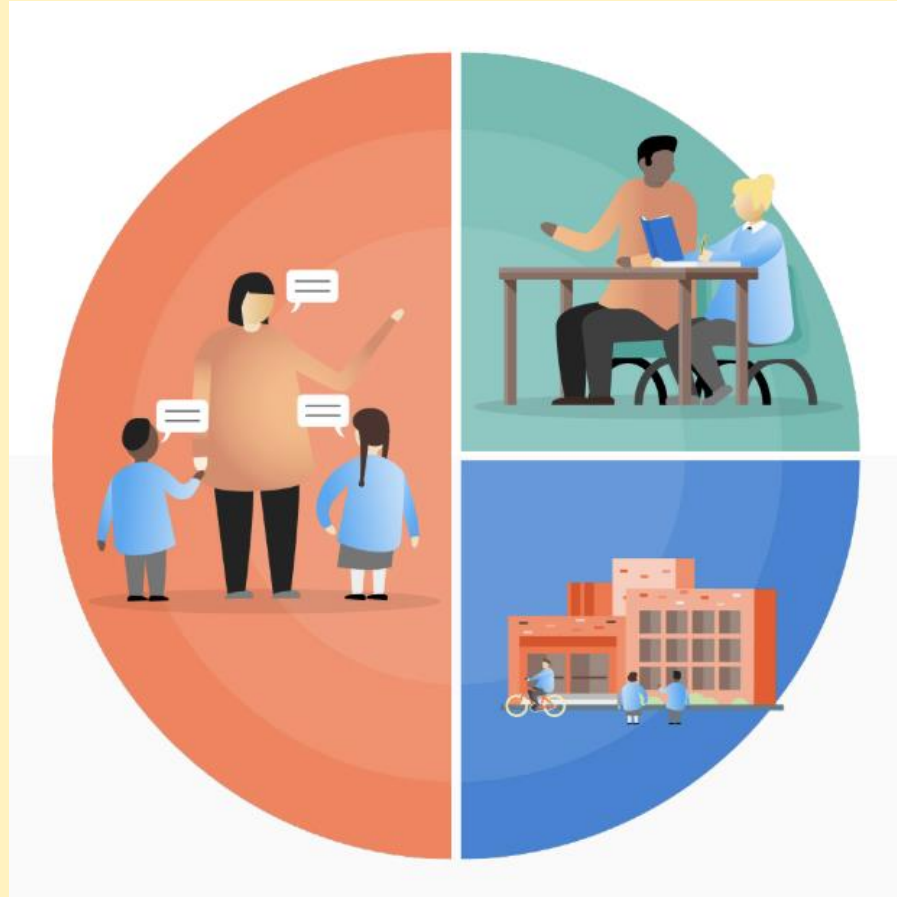
Staff curriculum support
resources and training

Maths mastery specialist
teacher

Specialist music teacher in Y3/4

Verbal feedback at the point of
learning – ‘the path well
trodden’

Teacher conferencing sessions



Evidence-informed decision making

Speech and Language Link

Nurture class provision (C & I and SEMH
interventions)

Reading interventions and support (Early reading
use of Little Wandle)

Dyslexia assessments, interventions and referrals

Maths interventions with maths specialist teacher

Free breakfast club attendance and milk cartons

Subsidised residential visits

1:1 / small group emotional support

Funded school sweatshirt & PE t-shirt

Assistant SENCo & Early Help leader
working closely with families

Contribution to peripatetic music
lessons